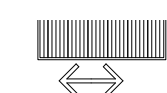




Reviewed for Code Compliance  
Inspection Division  
Approved with Conditions

Date: 05/16/14

ON  
R TO  
TRAVEL



PREDOMINANT  
DIRECTION OF TRAVEL

FIG. 302.3 -  
OPENINGS IN FLOOR OR  
GROUND SURFACES

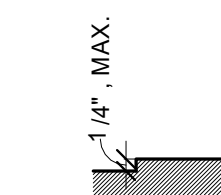


FIG. 303.2 -  
VERTICAL CHANGES IN  
LEVEL

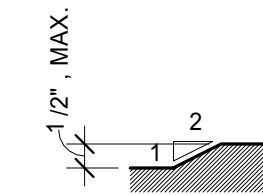


FIG. 303.3 -  
BEVELED CHANGES IN  
LEVEL

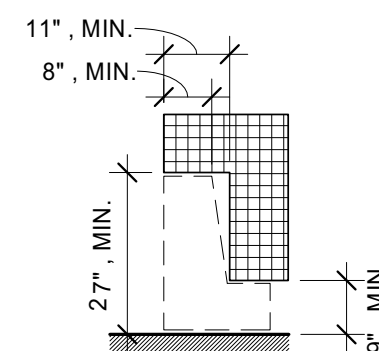


FIG. 306.3 -  
KNEE CLEARANCE

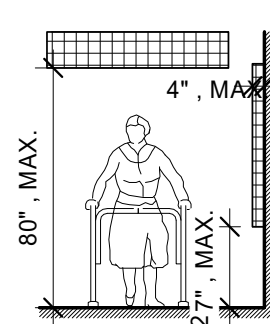


FIG. 307.2 -  
LIMITS OF PROTRUDING  
OBJECTS

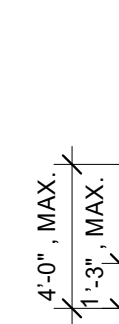


FIG. 308.2.1 -  
UNOBSTRUCTED  
FORWARD REACH

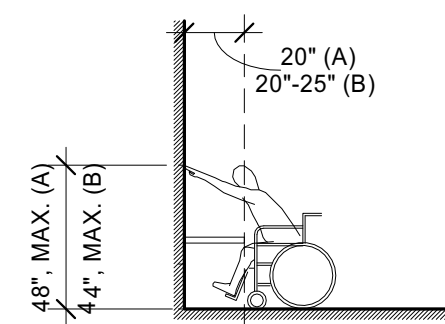


FIG. 308.2.2 -  
OBSTRUCTED HIGH  
FORWARD REACH

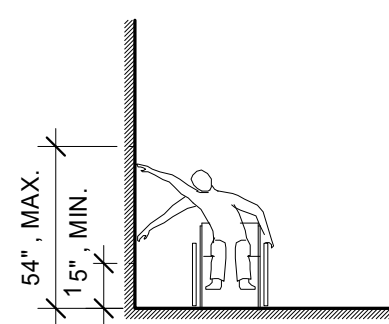


FIG. 308.3.1 -  
UNOBSTRUCTED SIDE  
REACH

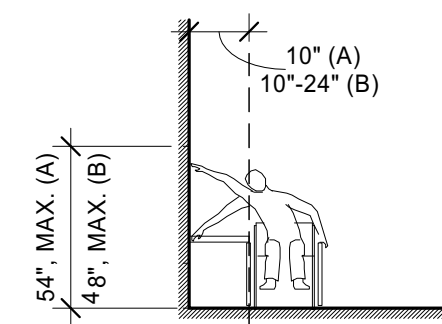
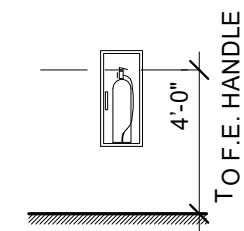


FIG. 308.3.2 -  
OBSTRUCTED SIDE  
REACH



FIRE EXTINGUISHING CABINET  
MOUNTING HEIGHT

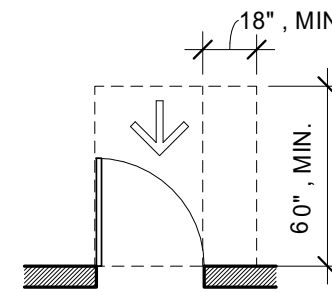
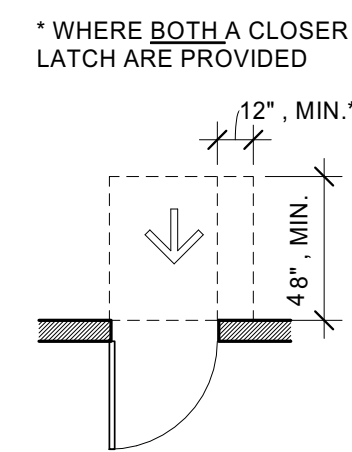
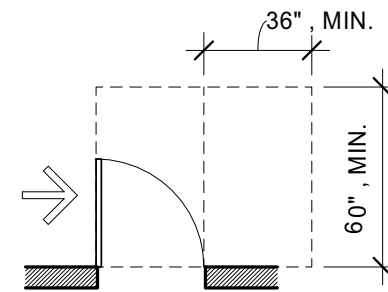


FIG. 404.2.4.1 -  
MANUEVERING CLEARNACE AT  
SWING DOOR

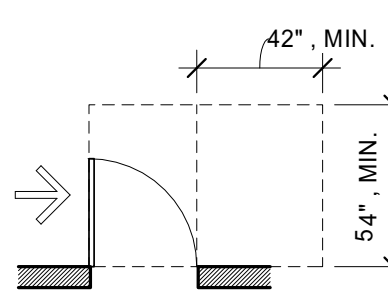
(A) FRONT APPROACH,  
PULL SIDE



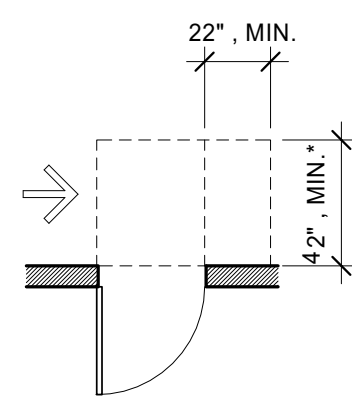
(B) FRONT APPROACH,  
PUSH SIDE



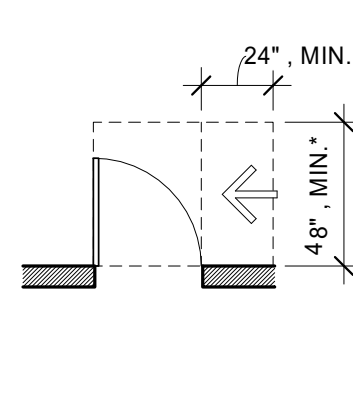
(C) HINGE APPROACH,  
PULL SIDE



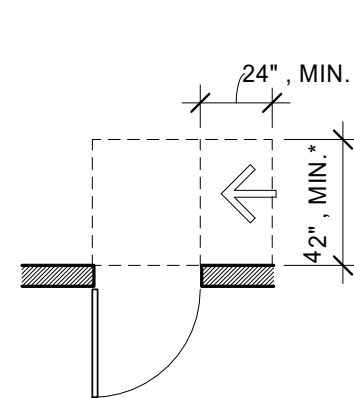
(D) HINGE APPROACH,  
PULL SIDE



(E) HINGE APPROACH,  
PULL SIDE



(F) LATCH APPROACH,  
PULL SIDE



(G) LATCH APPROACH,  
PUSH SIDE

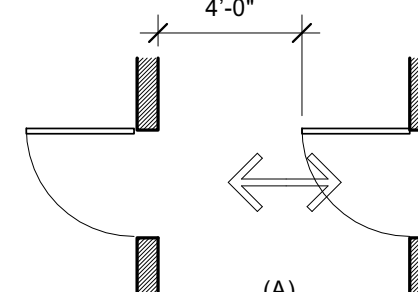


FIG. 404.2.6  
TWO DOORS IN A SERIES  
(A) AND (B)

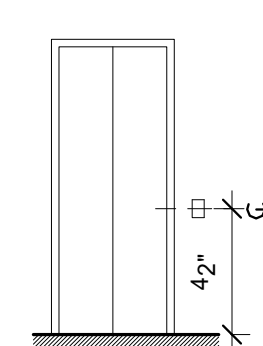


FIG. 407.2.2  
ELEV. CALL BUTTONS

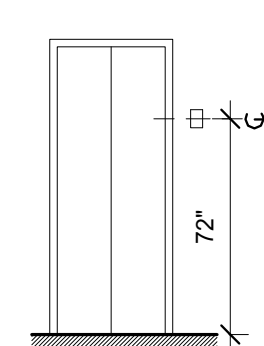


FIG. 407.2.3.1  
HEIGH OF ELEV.  
VISABLE SIGNALS

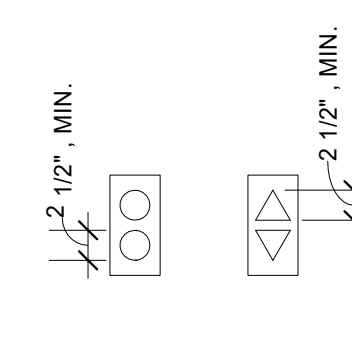


FIG. 407.2.3.2.2  
SIZE OF ELEV. VISIBLE  
SIGNALS

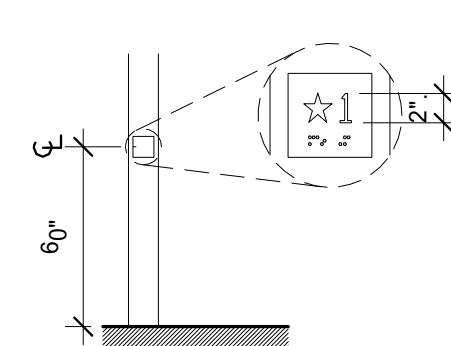


FIG. 407.2.4  
TACTILE CHARACTERS ON ELEV.  
HOISTWAY ENTRANCES

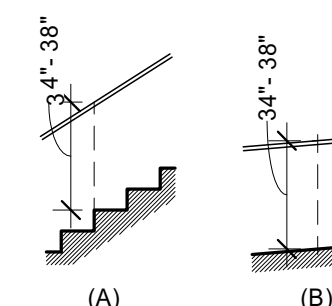


FIG. 505.4.  
HANDRAIL HEIGHT  
(A) STAIRS  
(B) RAMPS

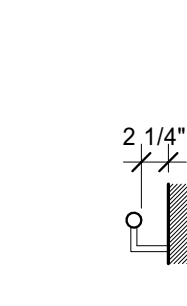


FIG. 505.5  
HANDRAIL  
CLEARANCE

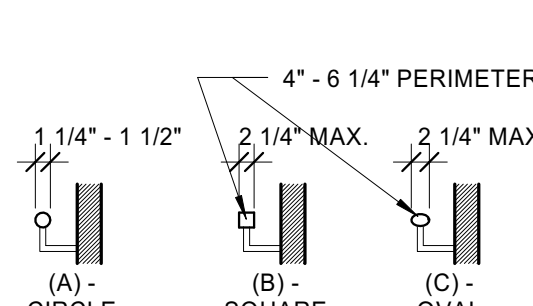


FIG. 505.7  
HANDRAIL CROSS SECTION  
(A) CIRCULAR  
(B) AND (C) NON CIRCULAR

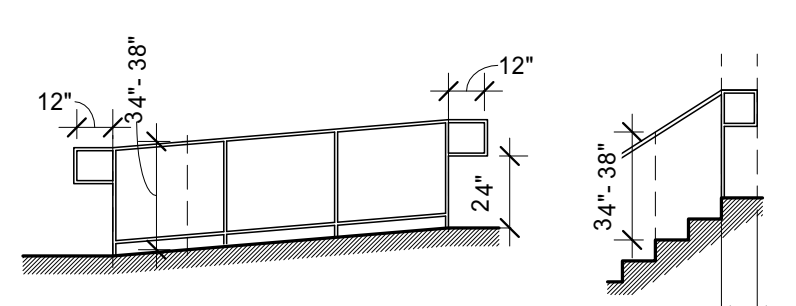


FIG. 505.10.1  
TOP AND BOTTOM HANDRAIL  
EXTENSIONS AT RAMPS

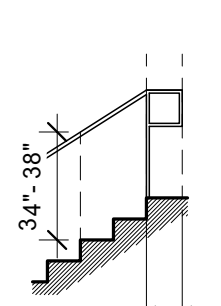


FIG. 505.10.2  
TOP HANDRAIL  
EXTENSION AT STAIRS

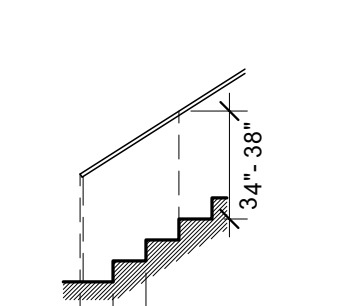


FIG. 505.10.3  
TOP HANDRAIL  
EXTENSION AT STAIRS

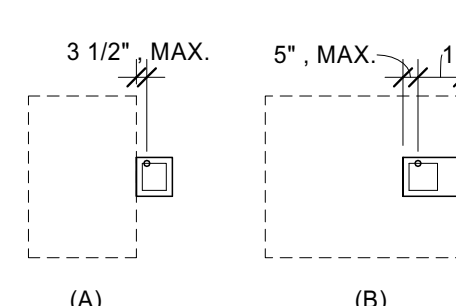


FIG. 602.5  
DRINKING FOUNTAIN SPOUT  
LOCATION  
(A) PARALLEL APPROACH  
(B) FORWARD APPROACH

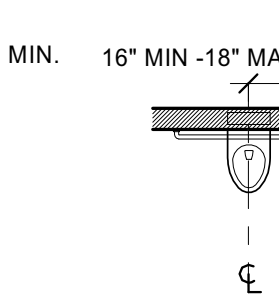


FIG. 604.2  
WATER CLOSET LOCATION

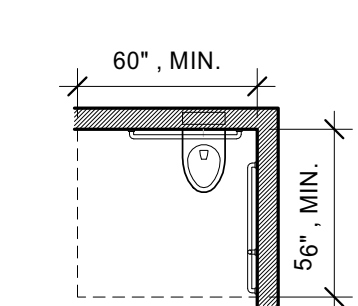


FIG. 604.3.1  
SIZE OF CLEARANCE FOR WATER  
CLOSET

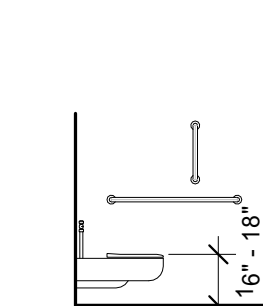


FIG. 604.4  
HEIGHT TO TOP OF SEAT

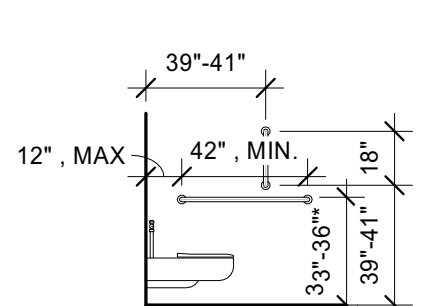


FIG. 604.5.1  
SIDE WALL GRAB BAR  
FOR WATER CLOSET

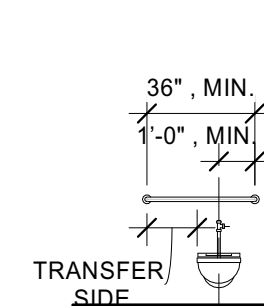


FIG. 604.5.2  
REAR WALL GRAB BAR  
FOR WATER CLOSET

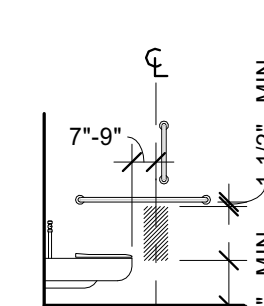


FIG. 604.7  
DISPENSER LOCATION  
(A) BELOW GRAB BAR  
(B) ABOVE GRAB BAR

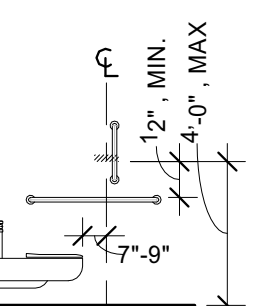


FIG. 605.2  
HEIGHT OF URINALS

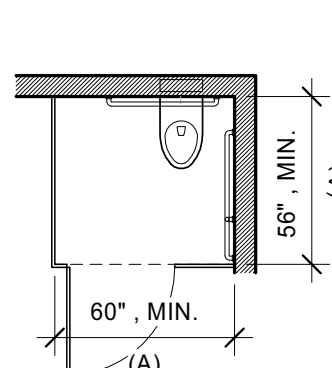


FIG. 604.8.1.1  
WHEELCHAIR ACCESSIBLE TOILET  
COMPARTMENTS

(A) WALL-HUNG WATER CLOSET  
(B) FLOOR-MOUNTED WATER  
CLOSET

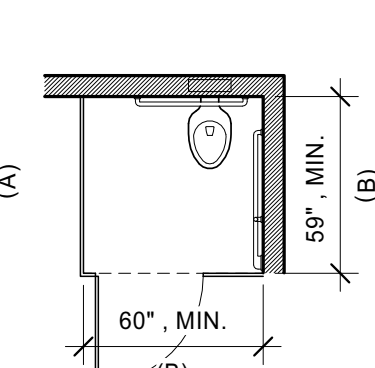


FIG. 604.8.1.2  
WHEELCHAIR ACCESSIBLE TOILET  
COMPARTMENTS

(A) WALL-HUNG WATER CLOSET  
(B) FLOOR-MOUNTED WATER  
CLOSET

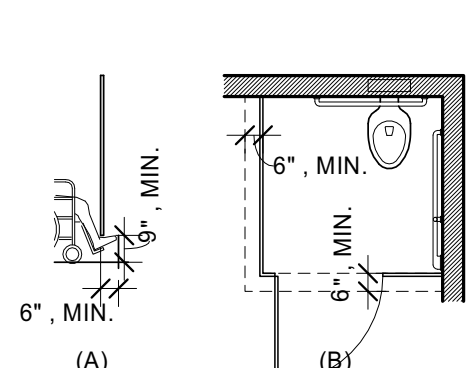


FIG. 604.8.1.4  
TOILET COMPARTMENT TOES  
CLEARANCE

(A) ELEVATION  
(B) PLAN

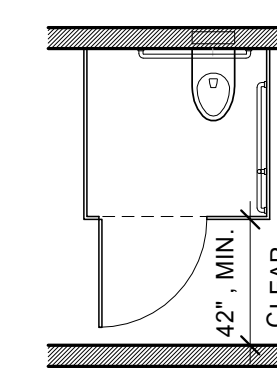


FIG. 604.8.3  
TOILET COMPARTMENT  
DOORS

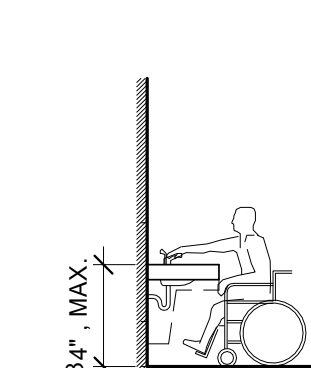


FIG. 606.3 -  
HEIGHT OF LAVATORIES  
AND SINKS

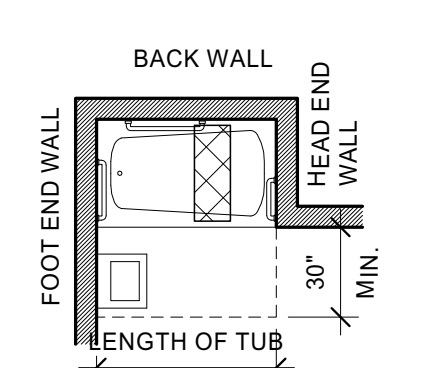


FIG. 607.2  
CLEARANCE FOR BATHTUBS

(A) WITHOUT PERMINANT SEAT  
(B) WITH PERMINANT SEAT

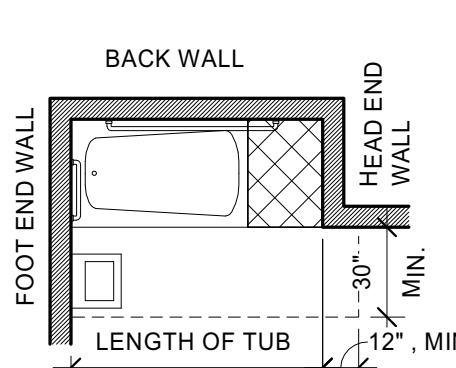


FIG. 607.4.2  
GRAB BARS FOR BATHTUB  
WITHOUT PERMINATE  
SEATS SECTION AND PLAN

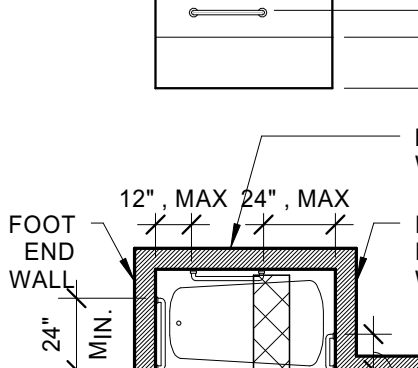


FIG. 607.4.1  
GRAB BARS FOR BATHTUB  
WITH PERMINATE SEATS  
SECTION AND PLAN

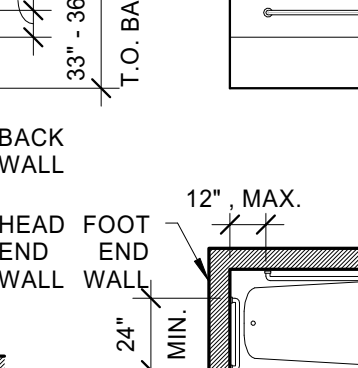


FIG. 610.2  
BATHTUB SEAT

(A) REMOVABLE IN-TUB SEAT SECTION AND PLAN  
(B) PERMINATE SEAT SECTION AND PLAN

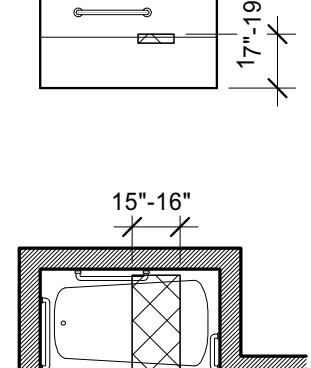


FIG. 609.2  
SIZE OF GRAB BARS

(A) CIRCULAR  
(B) AND (C) NON CIRCULAR

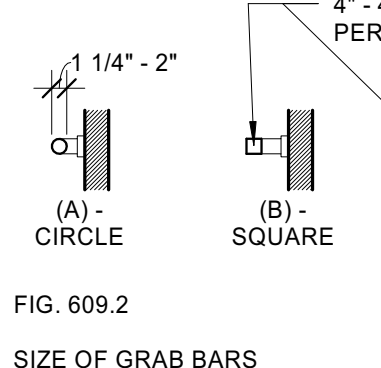


FIG. 609.3  
SPACING OF  
GRAB BARS

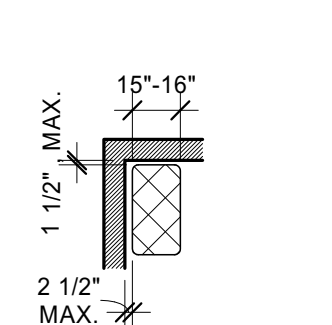


FIG. 610.3.1  
RECTANGULAR SHOWER  
COMPARTMENT SEAT

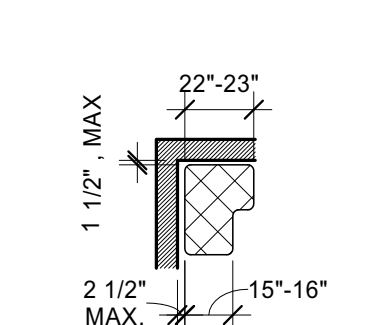


FIG. 610.3.2  
L-SHAPED SHOWER  
COMPARTMENT SEAT

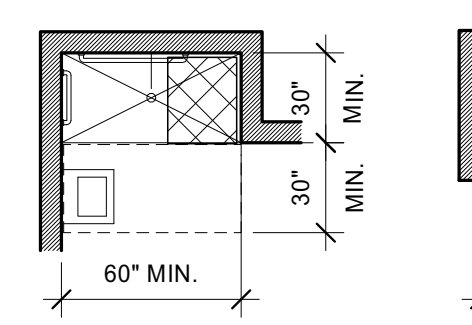


FIG. 608.2.2  
STANDARD ROLL-IN-TYPE  
SHOWER COMPARTMENT

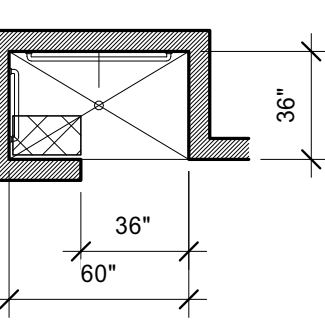


FIG. 608.2.3  
ALTERNATE ROLL-IN-TYPE  
SHOWER COMPARTMENT

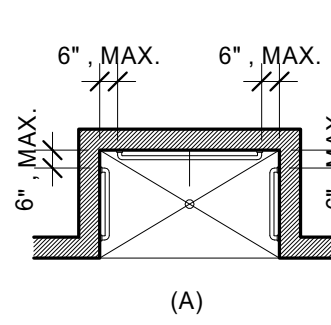


FIG. 608.3.2  
GRAB BARS IN ROLL-IN-TYPE

(A) STANDARD ROLL-IN-TYPE SHOWER  
(B) ROLL-IN-TYPE SHOWER WITH SEAT  
(C) ALTERNATE ROLL-IN TYPE SHOWER

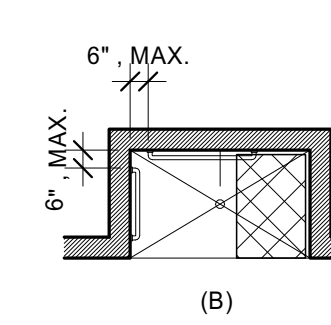


FIG. 608.3.2  
GRAB BARS IN ROLL-IN-TYPE

(A) STANDARD ROLL-IN-TYPE SHOWER  
(B) ROLL-IN-TYPE SHOWER WITH SEAT  
(C) ALTERNATE ROLL-IN TYPE SHOWER

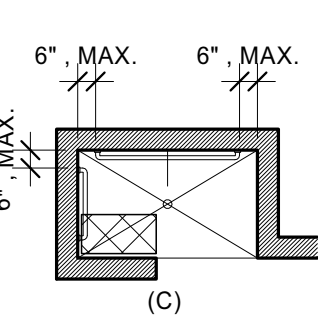


FIG. 608.3.2  
GRAB BARS IN ROLL-IN-TYPE

(A) STANDARD ROLL-IN-TYPE SHOWER  
(B) ROLL-IN-TYPE SHOWER WITH SEAT  
(C) ALTERNATE ROLL-IN TYPE SHOWER

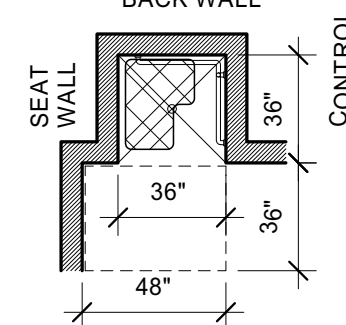


FIG. 608.2.1  
TRANSFER-TYPE  
SHOWER  
COMPARTMENT

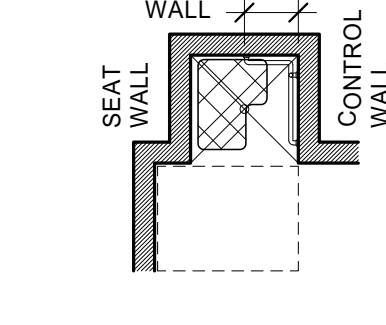


FIG. 608.3.1  
GRAB BARS IN  
TRANSFER-TYPE  
SHOWERS

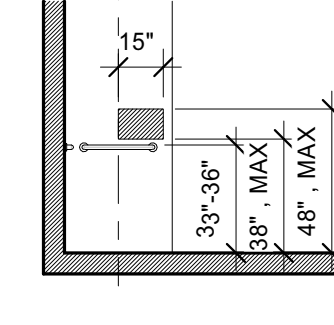


FIG. 608.3.5  
CONTROLS IN  
TRANSFER-TYPE  
SHOWERS

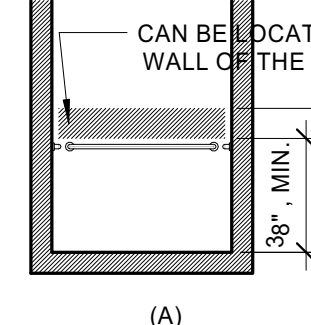


FIG. 608.3.5  
CONTROLS IN  
TRANSFER-TYPE  
SHOWERS

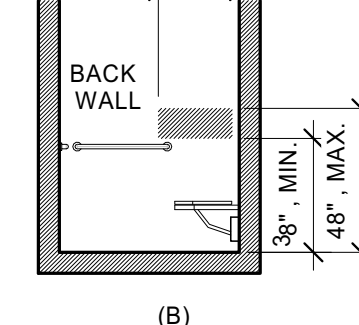


FIG. 608.3.5  
CONTROLS IN  
TRANSFER-TYPE  
SHOWERS

Prepared For:

118 on Munjoy Hill,  
LLC

118 CONGRESS STREET  
PORTLAND, ME 04101

Consultant:

ARCHETYPE  
architects

48 Union Wharf Portland, Maine 04101  
00772402 ARCHTYPE@ARCHTYPEPACOM

Architect:

118 ON MUNJOY HILL

118 CONGRESS STREET  
PORTLAND, MAINE

Project:

Revisions:

Date: 07 MAR 2014

Scale: As indicated

ACCESSIBILITY  
STANDARDS

AS1.1